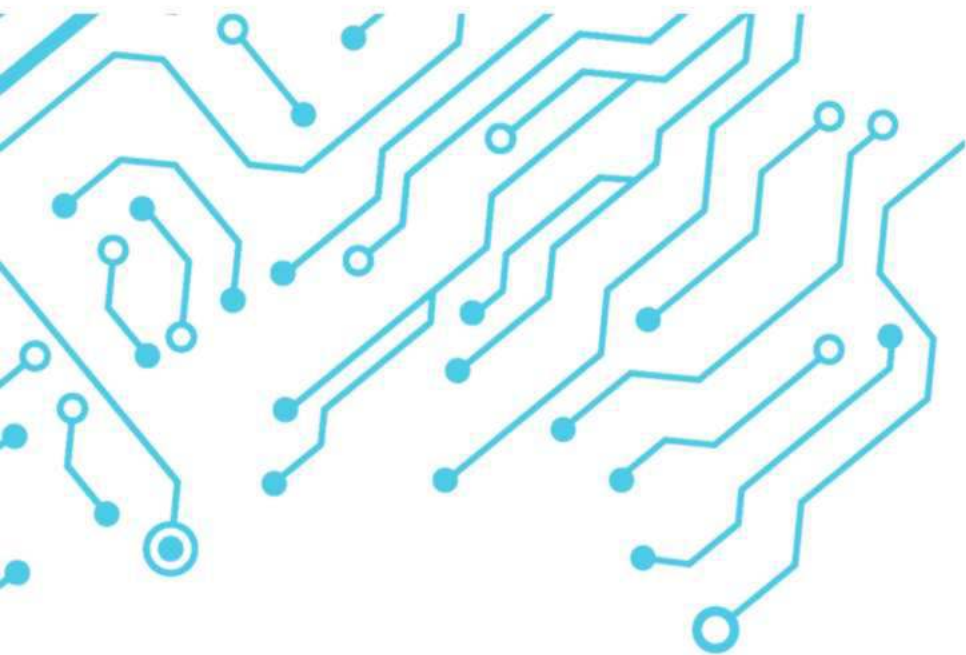




OUR **COMPANY** PROFILE

www.electromechmw.com



Shop A2, Guoji
Shopping Complex,
Area 49,
P.O. Box 20433,
Lilongwe 2,
Malawi.

Email: sales@electromechmw.com
admin@electromechmw.com

Website: www.electromechmw.com



VISION STATEMENT

To be the electrical and mechanical consultant of choice in Malawi and beyond



MISSION STATEMENT

To support each of our clients with specifically-designed, practical, innovative and cost-effective engineering solutions and unmatched customer service.

ABOUT US

ElectroMech Solutions Limited is a professional consulting firm that provides mechanical and electrical engineering services to the industry at large.



Our team of electrical and mechanical engineers boasts of many years of extensive experience from the manufacturing/production, utility, service and commercial industries, in all our areas of service delivery. This ensures that our partnering with you comes with a commitment to design integrity and quality, and meticulous attention to detail to ensure an unrivalled proactive engineering approach that delivers practical, cost-effective,

sustainable and energy-efficient solutions for each assignment that you assign us to execute for you. ElectroMech Solutions believes in detailed consultations with our clients and assessment of facilities, to package specifically-designed comprehensive, innovative and cost-effective electrical and mechanical engineering solutions that meet with your particular needs.

OUR ELECTRO-MECHANICAL CONSULTANCY SERVICES

We are excited to assist you with engineering consultations and professional advice in the areas of:

DESIGN & DEVELOPMENT



- Industrial and Commercial Electro-mechanical Systems and Services
- Structural Designs
- Comprehensive Design Reviews

PROJECT MANAGEMENT



- On site HSE and QA/QC
- Commissioning, Take over / Hand-over Inspection

ASSET MANAGEMENT



- Mechanical & Electrical Systems Audits
- Energy Audits (Steam, Compressed Air, Electrical/Power)
- Safety Audits
- Performance testing, assessments and optimization
- Operation & Maintenance Strategy
- Asset Decommissioning
- ISO systems development and audits

ADVISORY



- Advice and recommendations on design, build, operation, maintenance, inspection and compliance of your electrical and mechanical systems and services. ElectroMech Solutions Ltd also undertakes assessments relating to electrical and mechanical claims.

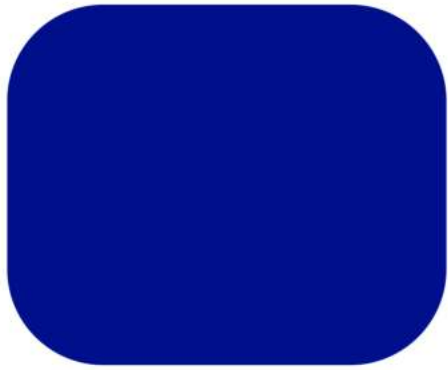


***Professional mechanical
and electrical engineering
consulting firm***

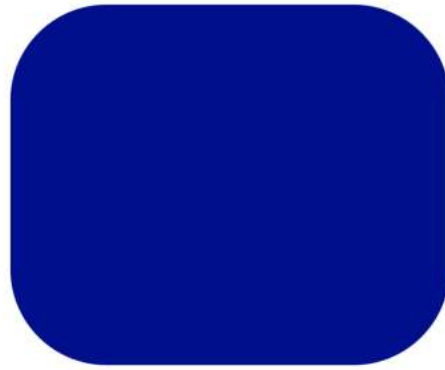
Our team works to ensure that we remain abreast of technological development in our areas of expertise, especially where such advancements have value-adding potential for you our clients

OUR LEADERSHIP TEAM

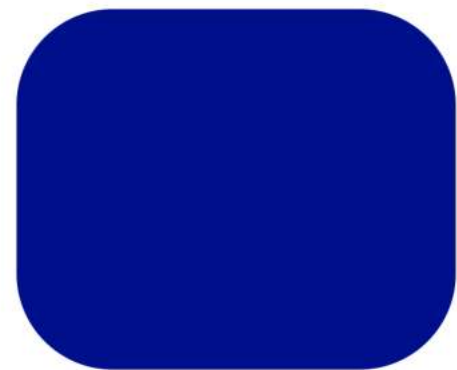
Our leadership team comprises of the following Directors:



Eng. Eugenio
Tebulo



Eng. Stephen
Chakhwantha



Wakisa
Mwalughali

Qualifications and experience of key personnel



Some of the major competencies of the key personnel are as follows:

- 1** Maintenance, projects and improvements of factory equipment and systems
- 2** Design, installation and project management in building services industry.
- 3** Design, installation and management of petrochemical service industry
- 4** Design, installation and assessment of water services systems
- 5** ISO system establishment and management
- 6** High and low electric voltage installations.

OUR BANKING DETAILS

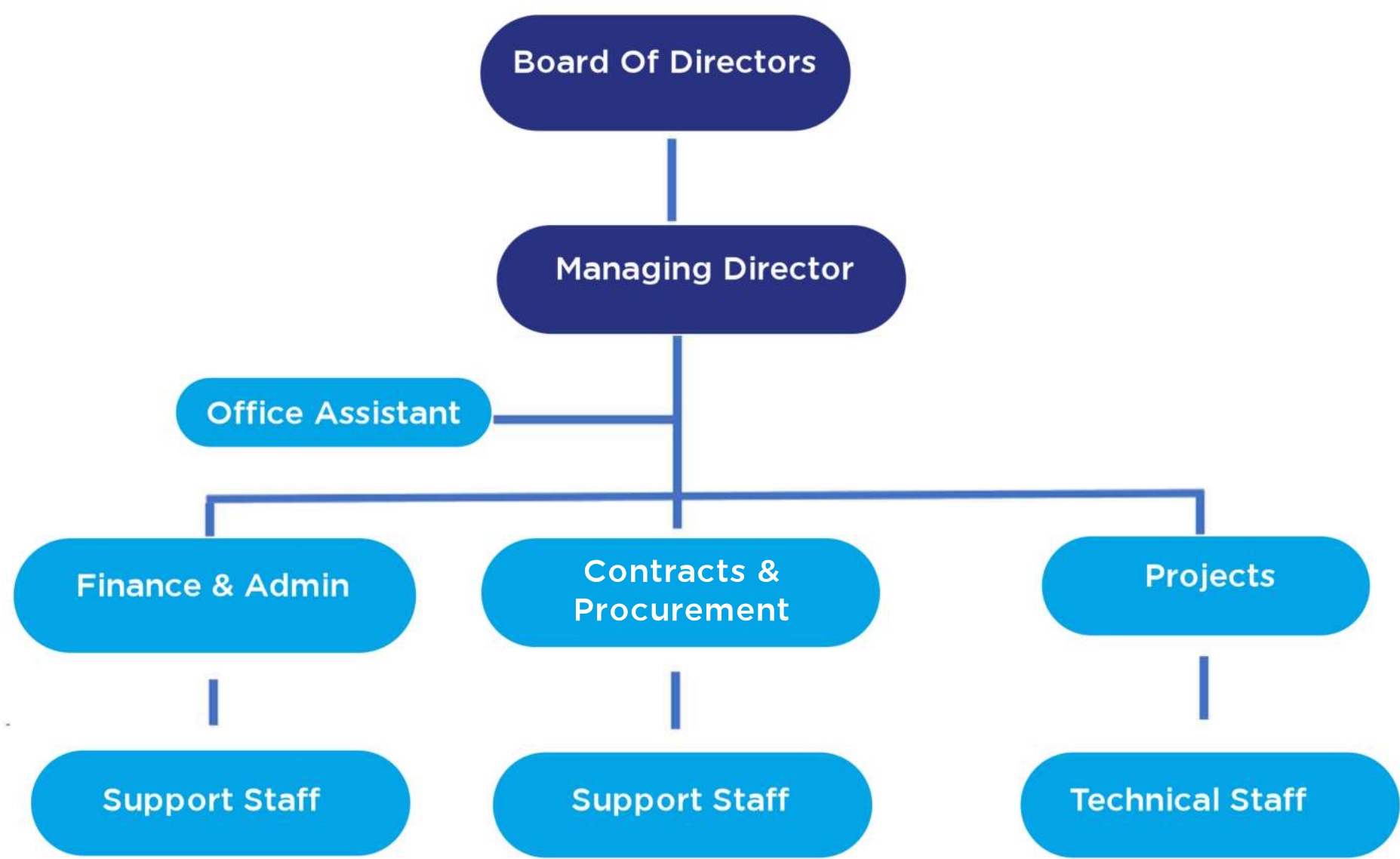
We are a registered company with bank accounts with the following local bank:

BANK: Standard Bank of Malawi

BRANCH: Capital City Branch



ORGANOGRAM FOR ELECTROMECH SOLUTIONS LTD



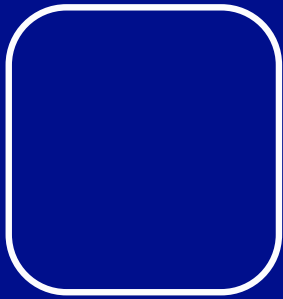
COMPANY REGISTRATION DETAILS

ElectroMech Solutions Ltd is a company incorporated in Malawi. The company is registered with the Office of Registrar of companies as well as the PPDA. The company is also cleared with the Malawi Revenue Authority.

Certificate Number: MRA/TIN/LSTO/00178385

Date Of Registration: 28/08/2024

TIN: 7068701



JOB EXPERIENCE

PROJECTS UNDER ELECTROMECH SOLUTIONS LIMITED:

CLIENT

SERVICES



Consultancy Services for the Assessment of Electrical Equipment Protection and Preparation of Scope of Works for Improvement of Equipment Protection at NOCMA Blantyre, Lilongwe, Mzuzu and Chilumba.



Provision of Consultancy Service for the Electrical Installation Audit at NBS Bank Head office in Blantyre



Provision of Consultancy Services for the Valuation of Grain Securities Limited



Provision of Consulting Engineering Services for RUDEVIT Project in Chileka, Blantyre



Provision of Consultancy Services for the Assessment and Valuation of Boiler Equipment

REFERENCE CONTACTS

Gerald Luhanga
Ruo Consultants
P.O. Box 5827,
Limbe.
Mobile: +265 994 851 221, +265 888 862 023
Email: gluhanga71@yahoo.co.uk

James Sidira
Civil Top Engineering
P. O. Box 40526,
Kanengo, Lilongwe 4
Mobile: +265 999 951 121
Email: jamessidira@gmail.com

sales@electromechmw.com
admin@electromechmw.com



0991 398 317
0999 858 218
0888 638 338